

On the Roof

December 6 – 30, 2017



Another cold day, but another section of roof got put into place.



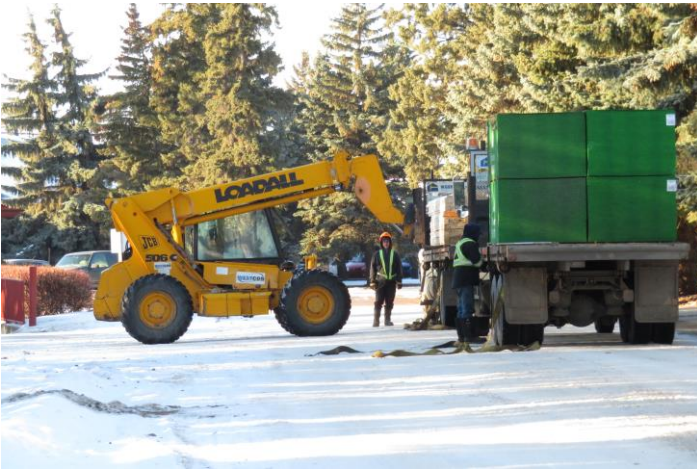
By December 11 trusses on East Wing are in place.



Measuring and marking for the accuracy in placement of the trusses on the North Wing.



By December 12 most all of the North Wing trusses are in place!



The arrival and unloading of the sheathing for the next big job!!



With the sheathing lifted up into place the task at hand moves forward.



Piece by piece they are carefully fitted.



The Chapel is beginning to take shape.



This is how 2017 ended.